

PECHA KUCHA

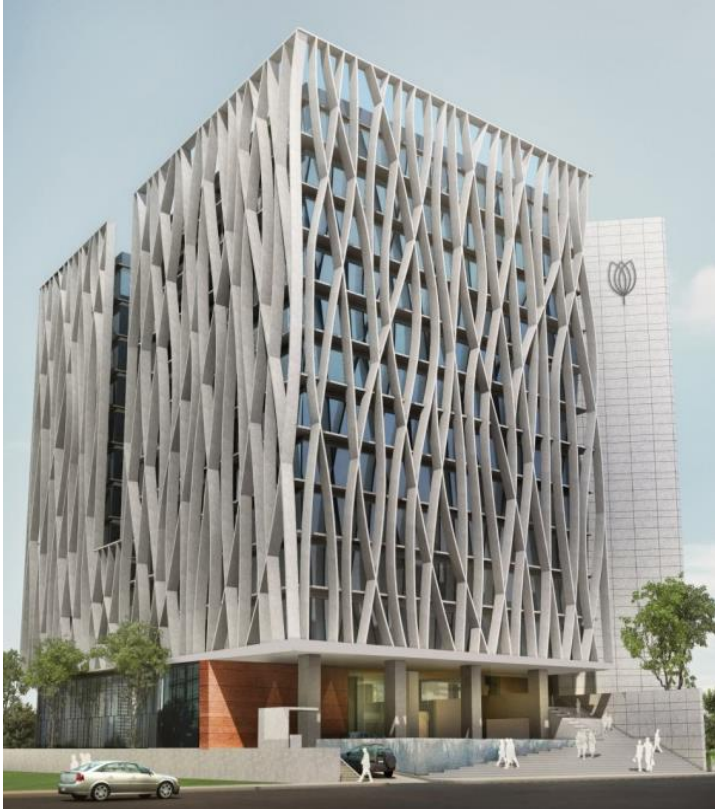
GRAMEEN MEGA PROJECTS



ASHRAFUL HASSAN

MANAGING DIRECTOR,
GRAMEEN TELECOM

THE LATEST DEVELOPMENTS OF THE GRAMEEN MEGA PROJECTS



TELECOM BHABAN, CORPORATE HQ OF GRAMEEN COMPANIES.



SAMAJIK CONVENTION CENTRE & HOSPITALITY MANAGEMENT INSTITUTE



SAMAJIK HEALTH SCIENCE INSTITUTE & RESEARCH CENTER (SHSIRC)

Why did we undertake these mega projects ?

- ☐ To facilitate social business in a bigger way
- ☐ Focus in healthcare, educational, industrial and environmental sectors.

PRESENTED by ASHRAFUL HASSAN
JUNE 28, SBD 2019

TELECOM BHABAN (CORPORATE HQ OF GRAMEEN COMPANIES)

- ❑ Objective to provide adequate and quality office space for the Grameen organizations.
- ❑ It will be a hub of implementation, expansion and proper management of social businesses.
- ❑ Its an opportunity for Grameen organization to have the ownership of their own office space at a very reasonable price.






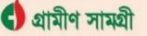








Project inaugurated by
Professor Dr. Muhammad Yunus
on **30 December 2015**

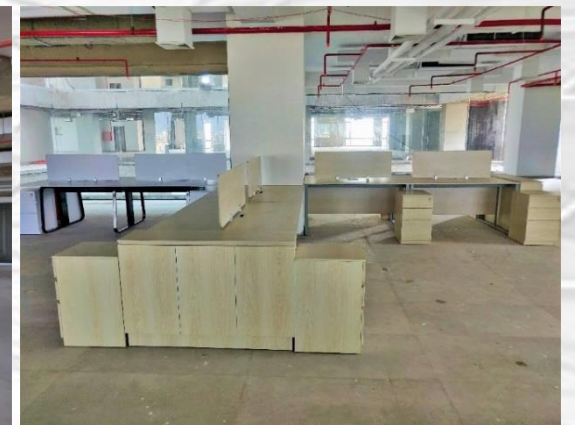
- ❑ Objective to provide adequate and quality office space for the Grameen organizations.
- ❑ It will be a hub of implementation, expansion and proper management of social businesses.
- ❑ Its an opportunity for Grameen organization to have the ownership of their own office space at a very reasonable price.



**Project Cost : 15 m USD, built area 32,000 sqm,
Project completed.**

FLOOR ALLOCATION PLAN

FLOOR	USER/ USE	FLOOR	USER/ USE
LEVEL 05		LEVEL 13	SEMINAR ROOM (90 PAX) 04 NOS. BANQUET HALL (168 PAX) 01 NOS. LOUNGE KITCHEN WITH PANTRY COOLING TOWER TOILET FOR LADIES, GENTS AND OTHERWISE ABLED
LEVEL 04	  	LEVEL 12	SEMINAR ROOM (100 PAX) 05 NOS. MEETING ROOM (20 PAX) 06 NOS. MEETING ROOM (12 PAX) 01 NOS. PRIVATE LOUNGE OPEN LOUNGE TOILET FOR LADIES, GENTS AND OTHERWISE ABLED
LEVEL 03	 	LEVEL 11	
LEVEL 02	SALES AND DISPLAY FOR GRAMEEN PRODUCTS DAY CARE RENTABLE SPACE 4,757 SFT.	LEVEL 10	
LEVEL 01	ENTRY LOBBY WAITING LOUNGE NOBEL GALLERY RENTABLE SPACE 4,712 SFT. TRANSFORMER ROOM HT METER ROOM GENERATOR ROOM BMS/ SECURITY ROOM FIRE CONTROL ROOM TOILET FOR LADIES, GENTS AND OTHERWISE ABLED INFINITY POOL GUARD STAND	LEVEL 09	
BASEMENT B1	CAR PARKING 34 NOS. MOTORCYCLE PARKING 28 NOS. BICYCLE PARKING 24 NOS. DRIVERS' WAITING CHILLER PLANT FACILITY FOR BICYCLISTS DRIVERS' TOILET STORE	LEVEL 08	
BASEMENT B2	CAR PARKING 53 NOS. MOTORCYCLE PARKING 50 NOS. DRIVERS' WAITING PUMP ROOM WATER RESERVOIR RAIN WATER COLLECTION AND TREATMENT PLANT	LEVEL 07	
		LEVEL 06	



NEXT EXTENTION

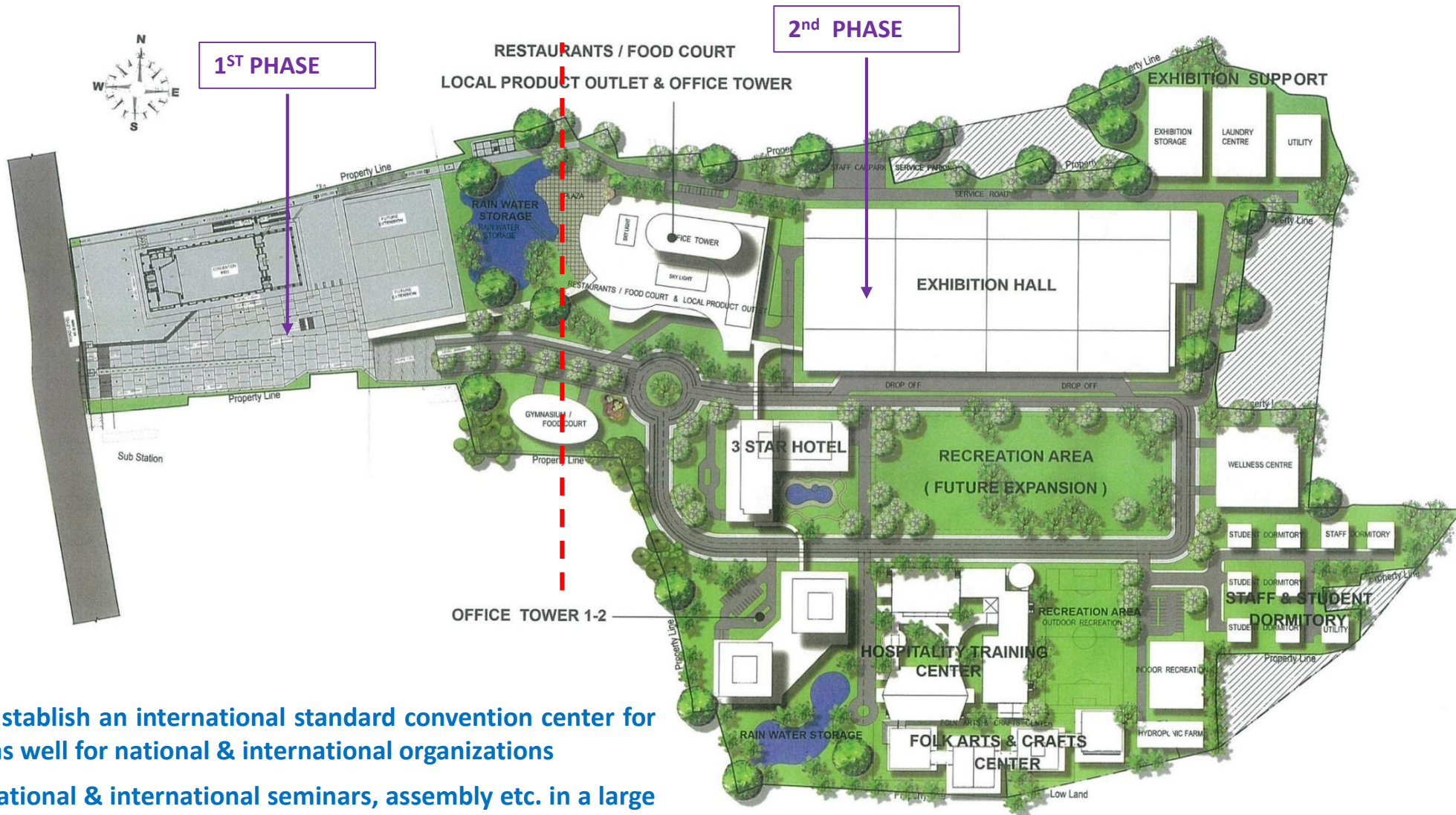


TOTAL LAND AREA – 1.74 ACRE

NEXT EXTENTION



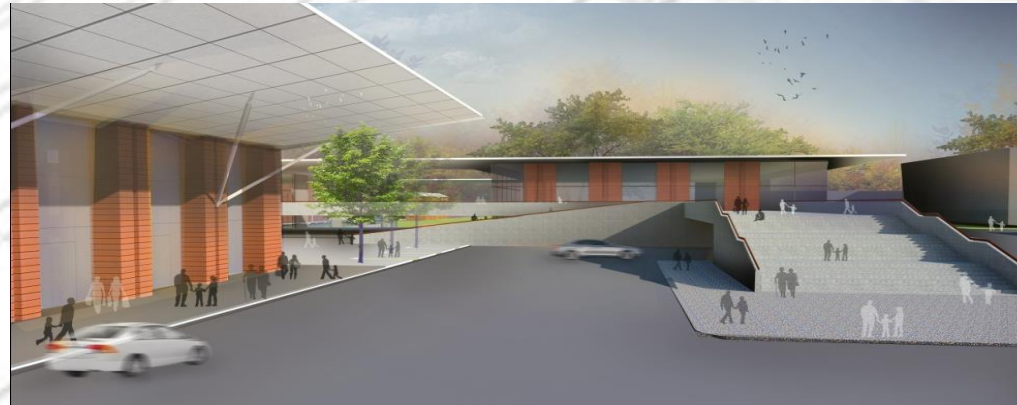
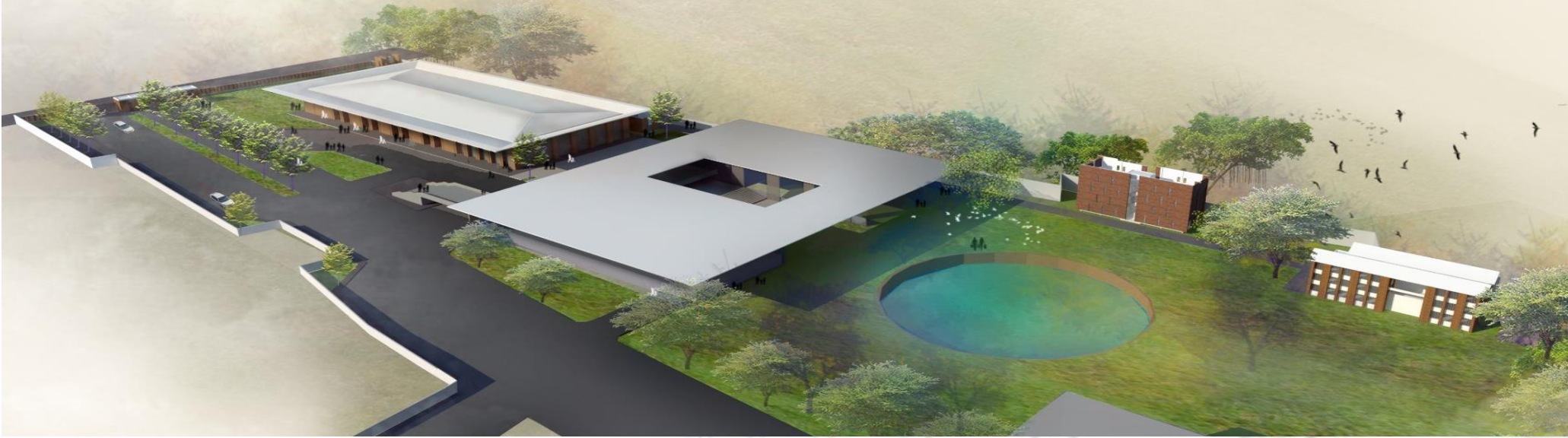
SAMAJIK CONVENTION CENTRE & HOSPITALITY MANAGEMENT INSTITUTE



- ❑ Objectives to establish an international standard convention center for our own use as well for national & international organizations
- ❑ To facilitate national & international seminars, assembly etc. in a large scale at an affordable price.
- ❑ Related business unit will be established to run the whole project in a Social Business Model.
- ❑ This facilities will be used for practical training to the student of HMTI.

Land area 60 acre

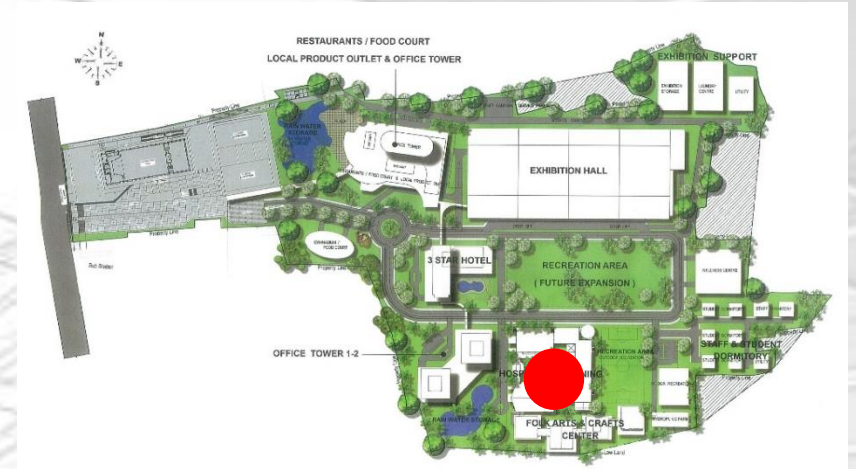
SAMAJIK CONVENTION CENTRE (1ST PHASE)



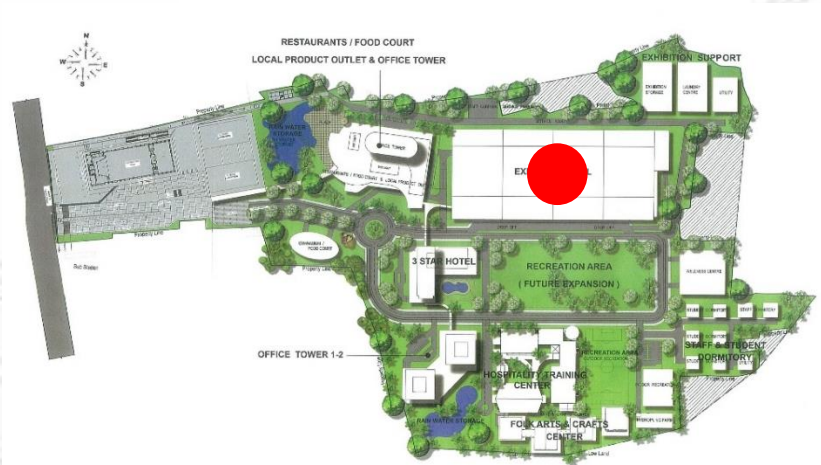
- ❑ Objectives to establish an international standard convention center for our own use as well for national & international organizations
- ❑ To facilitate national & international seminars, assembly etc. in a large scale at an affordable price.
- ❑ Related business unit will be established to run the whole project in a Social Business Model.
- ❑ These facilities will be used for practical training to the students of HMTI.



HOSPITALITY MANAGEMENT INSTITUTE – 20,550 sqm



EXHIBITION HALL – 84,260 sqm



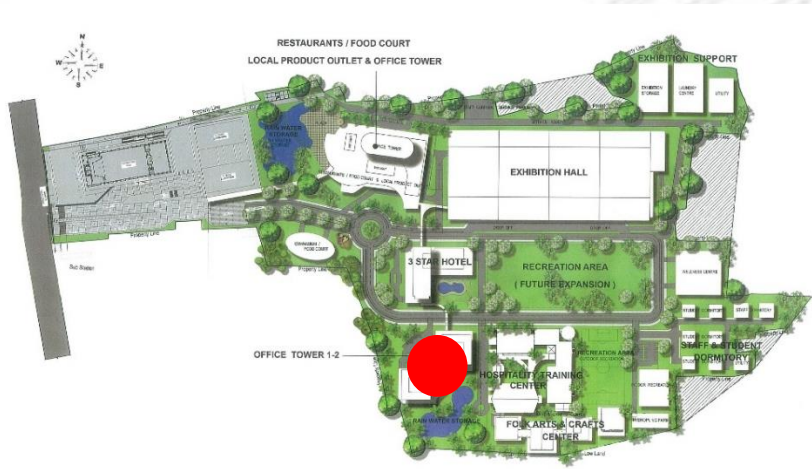
Restaurants / Food Court /
Local Product Outlet & Office Tower



FOLK ARTS AND CRAFTS CENTRE – 3,300 sqm



OFFICE TOWER 1 & 2 – 60,900 sqm



STUDENT & ESSENTIAL STAFF DORMITORY – 3,210 sqm



PERSPECTIVE VIEW



Project Cost : 110 m USD, built area 300 thousand sqm, Complementation period : end of 2023.

-
- An aerial photograph of the University of the Pacific campus. The image shows several large, modern, white buildings with flat roofs and some green roofs. The buildings are arranged in a cluster, with courtyards and green spaces between them. The campus is surrounded by lush green trees and a road with some parked cars. The overall scene is bright and sunny, with shadows cast by the buildings.



Inauguration by Professor Dr. Muhammad Yunus on 16 January, 2018



- ❑ To provide state of the art healthcare service to the mass people at an affordable price.
- ❑ Besides regular student economically challenged student specially female will get the opportunity for medical education.
- ❑ Project comprises of Hospital, Medical College, Nursing College & Medical Research Centre.

ACADEMIC BUILDING OF GCCN



HOSTEL BUILDING OF GCCN



PROJECT UNDER CONSTRUCTION





PROJECT UNDER CONSTRUCTION

Project Cost (including. Land, construction & equipment) : 230 m USD, built area 130 thousand sqm, Complementation period first phase March, 2020 and balance, 2023.

SAMAJIK HEALTH SCIENCE INSTITUTE & RESEARCH CENTER (SHSIRC) WITH A LARGE COMMERCIAL BUILDING



IN HOUSE CONSTRUCTION, QUALITY & COST EFFECTIVE



THANK YOU ALL

